



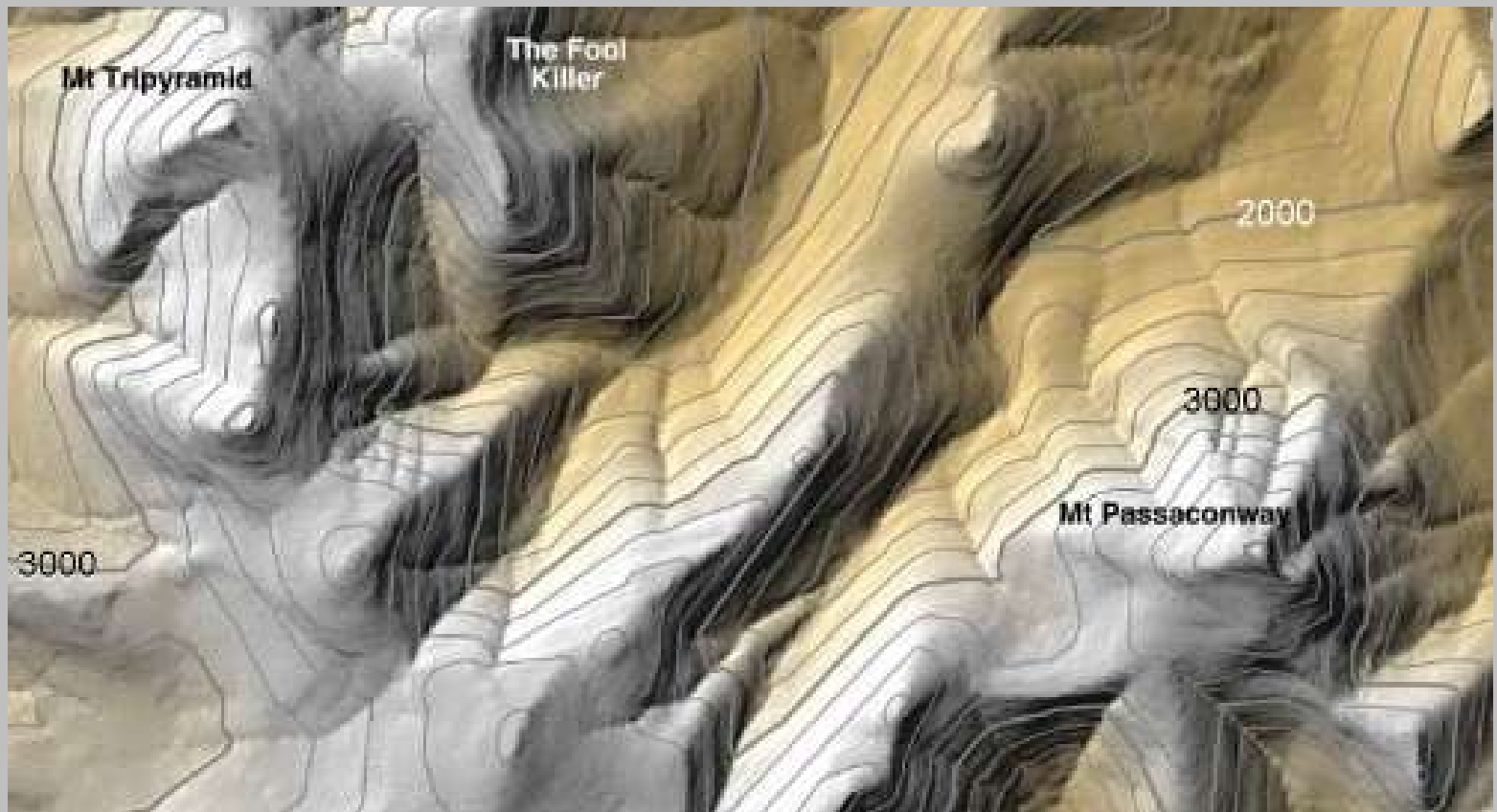
Topography & Navigation

Objective: To be able to interpret a topographic map to aid you in navigation

Chris Jorgensen 2011

Topography Maps

- A map provides a representation of natural and artificial features.





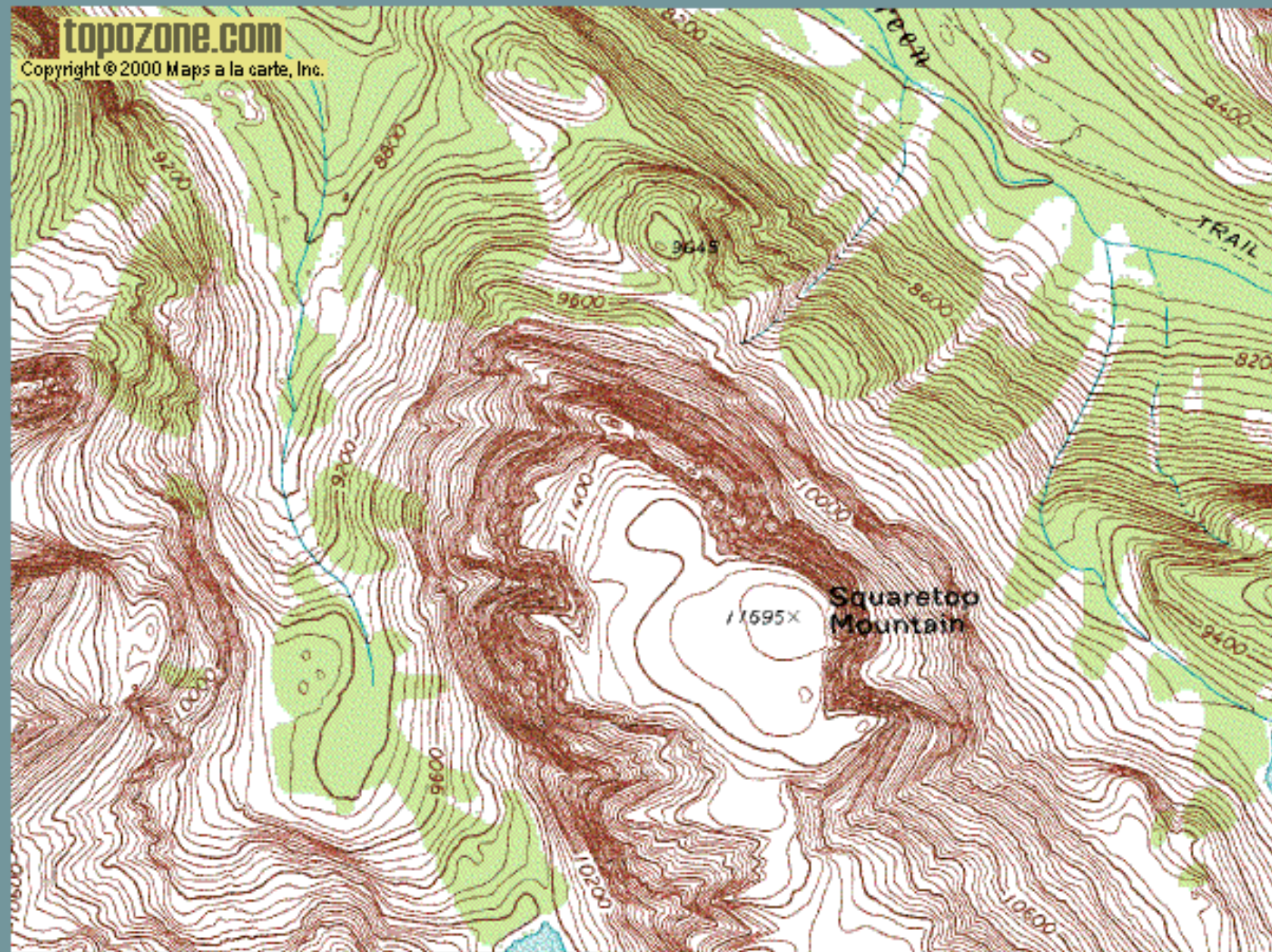
Who cares??

Topographic Maps

- 1) Can help you figure out where you are.
- 2) Can help you figure out the best way to get around.

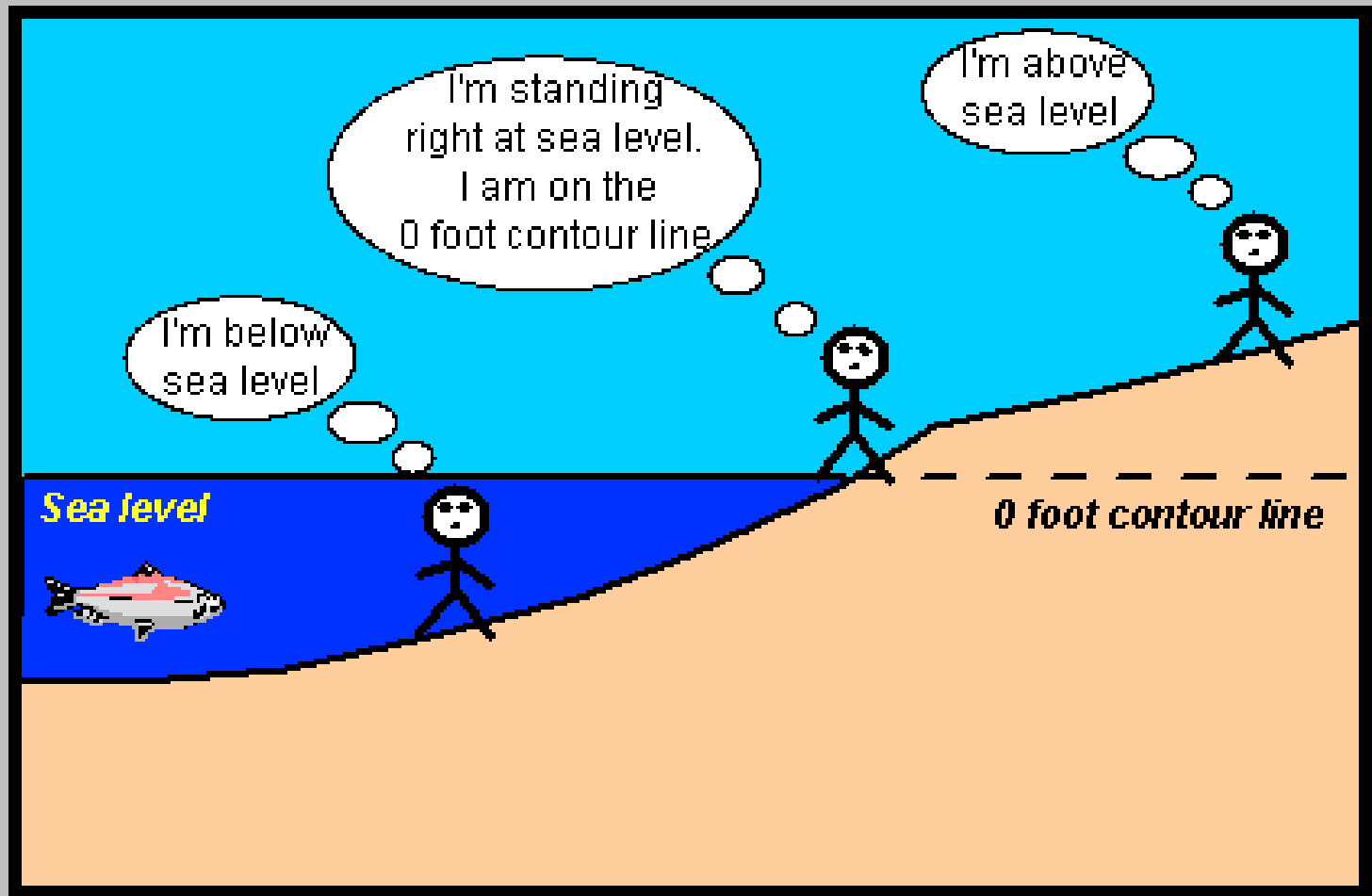
topozone.com

Copyright © 2000 Maps a la carte, Inc.



0 500 1000 1500 2000
meters
0 0.5 1.0
miles

Lines Elevation



Low water level

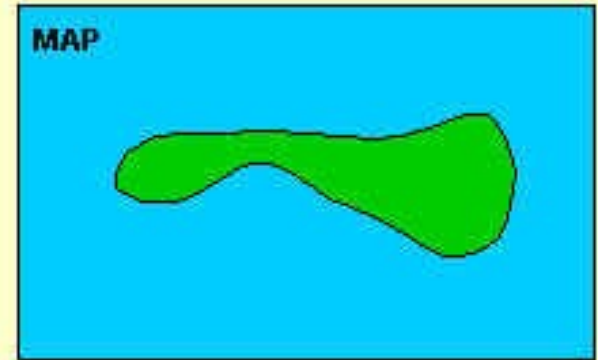


Medium water level

Cross Profile
(not to scale)



MAP

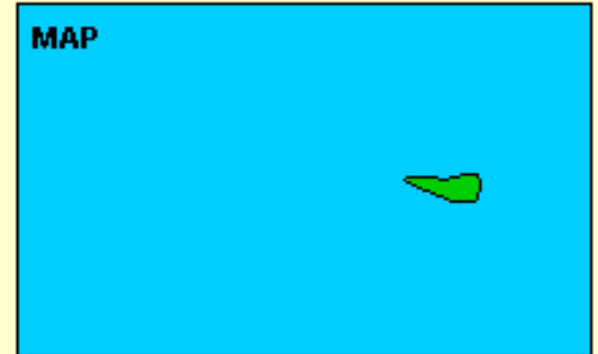


High water level

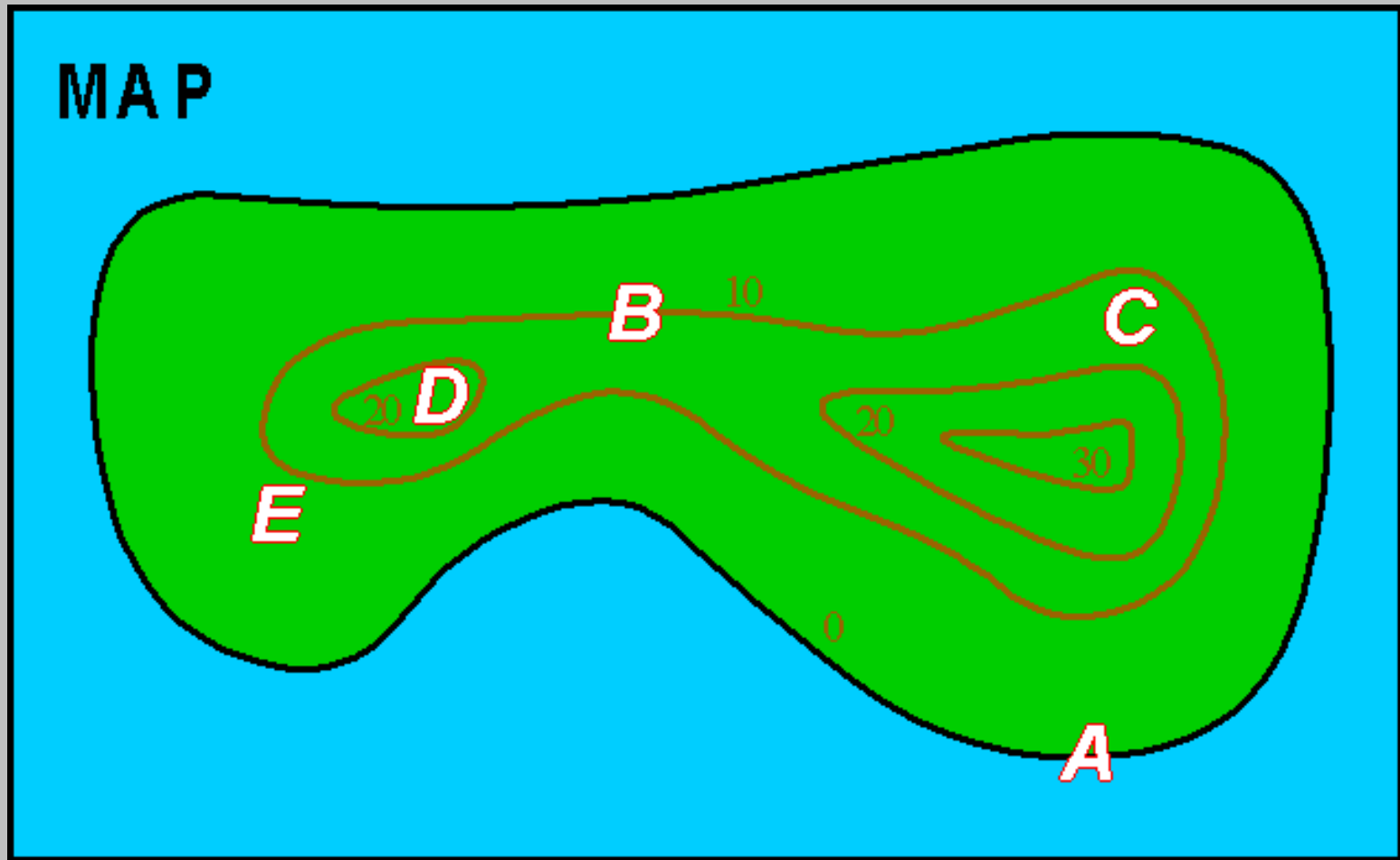
Cross Profile
(not to scale)



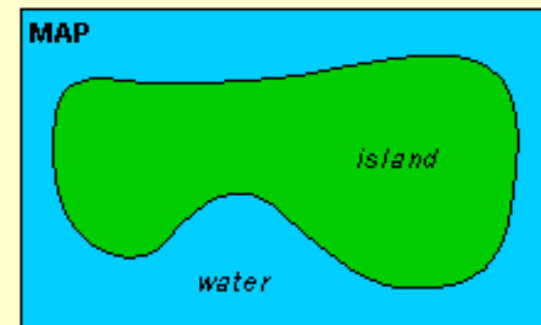
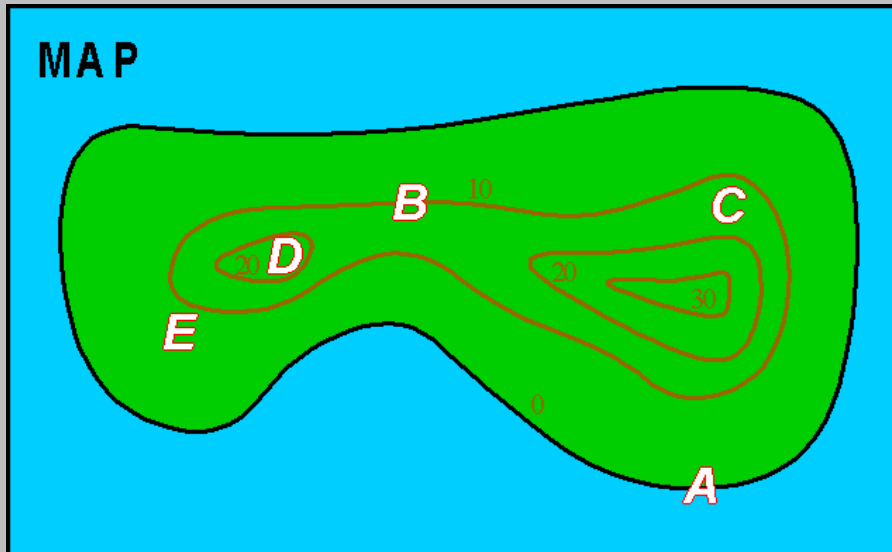
MAP



All lines of elevation shown



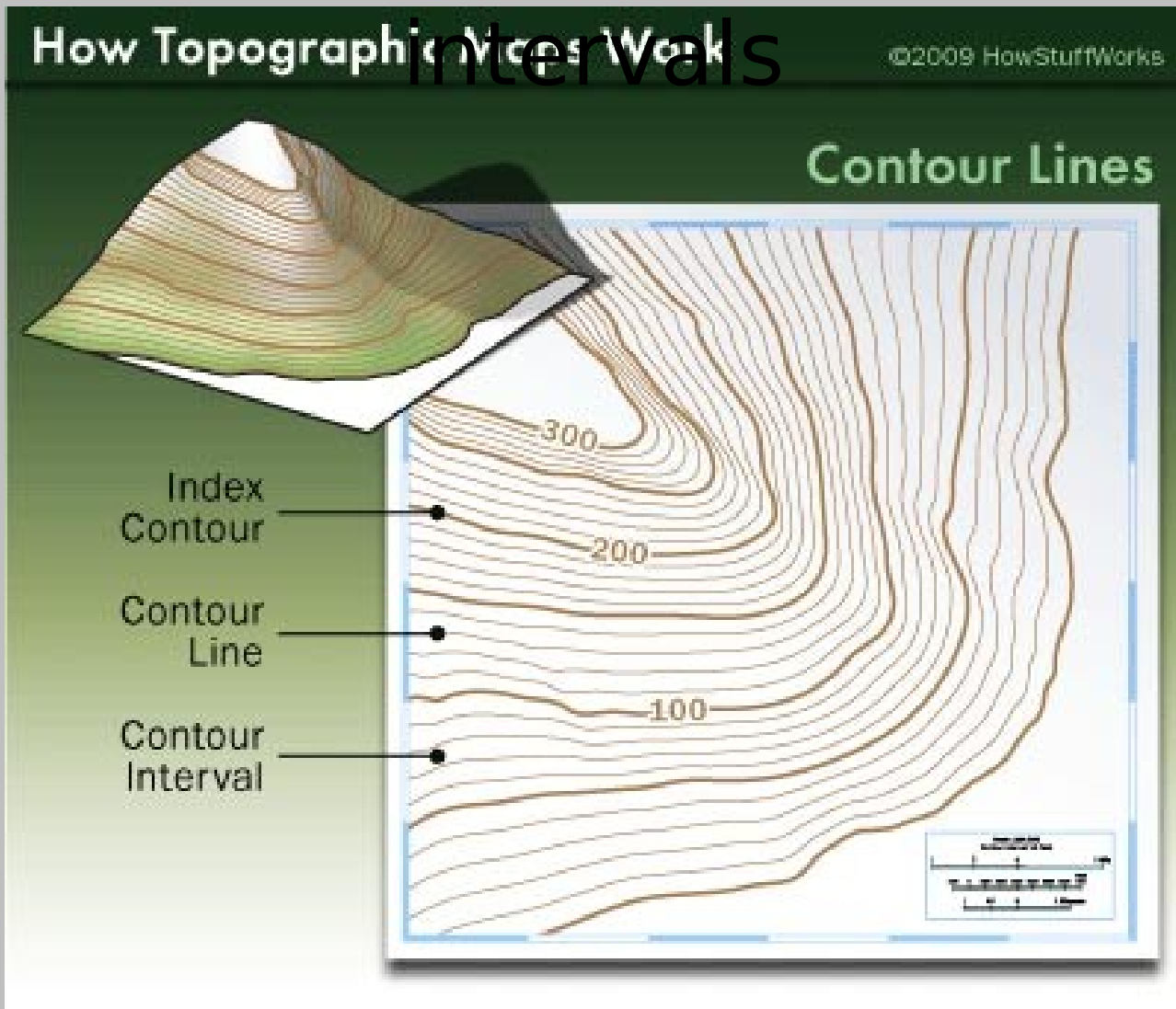
Note the cross section





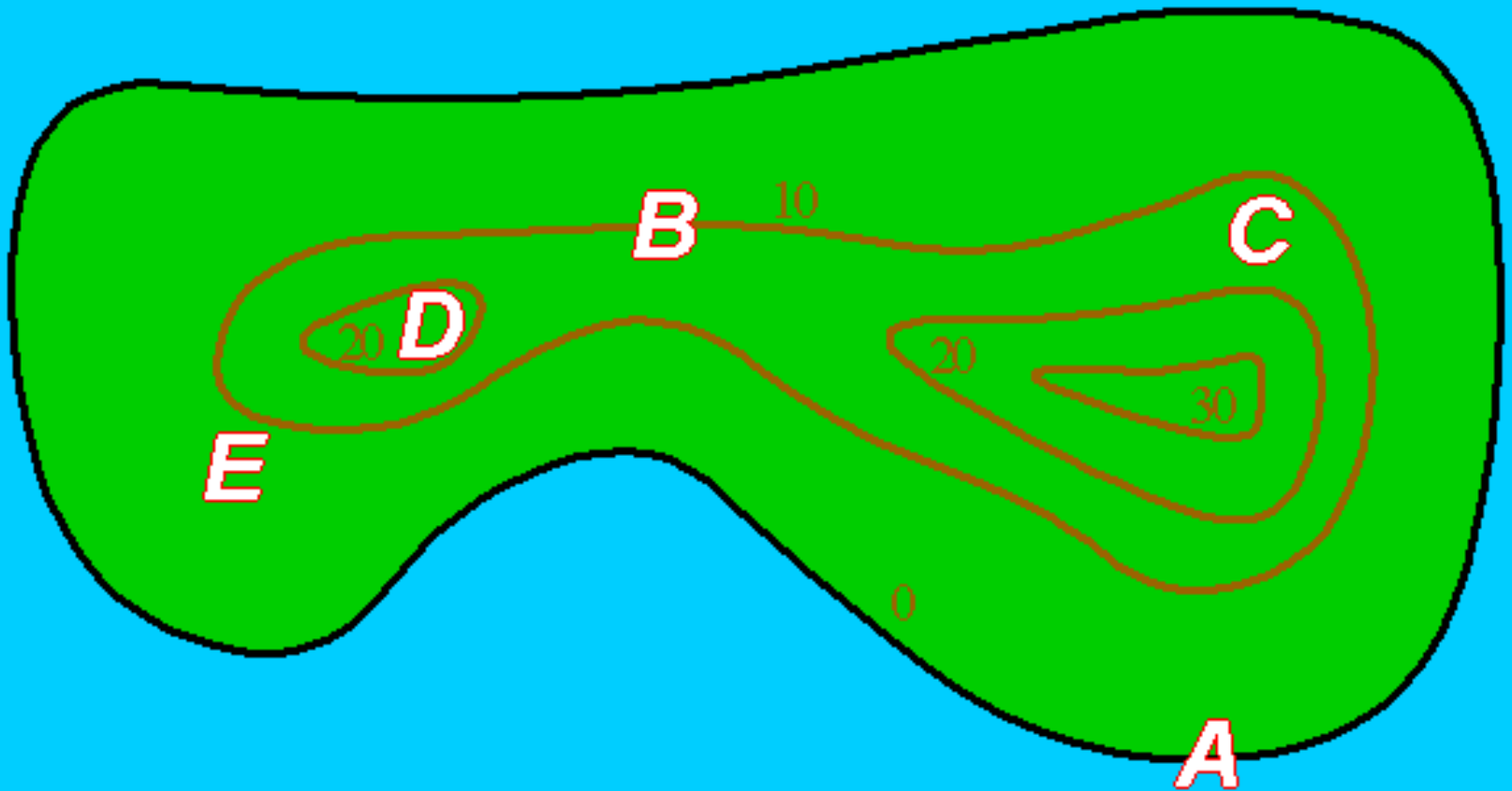


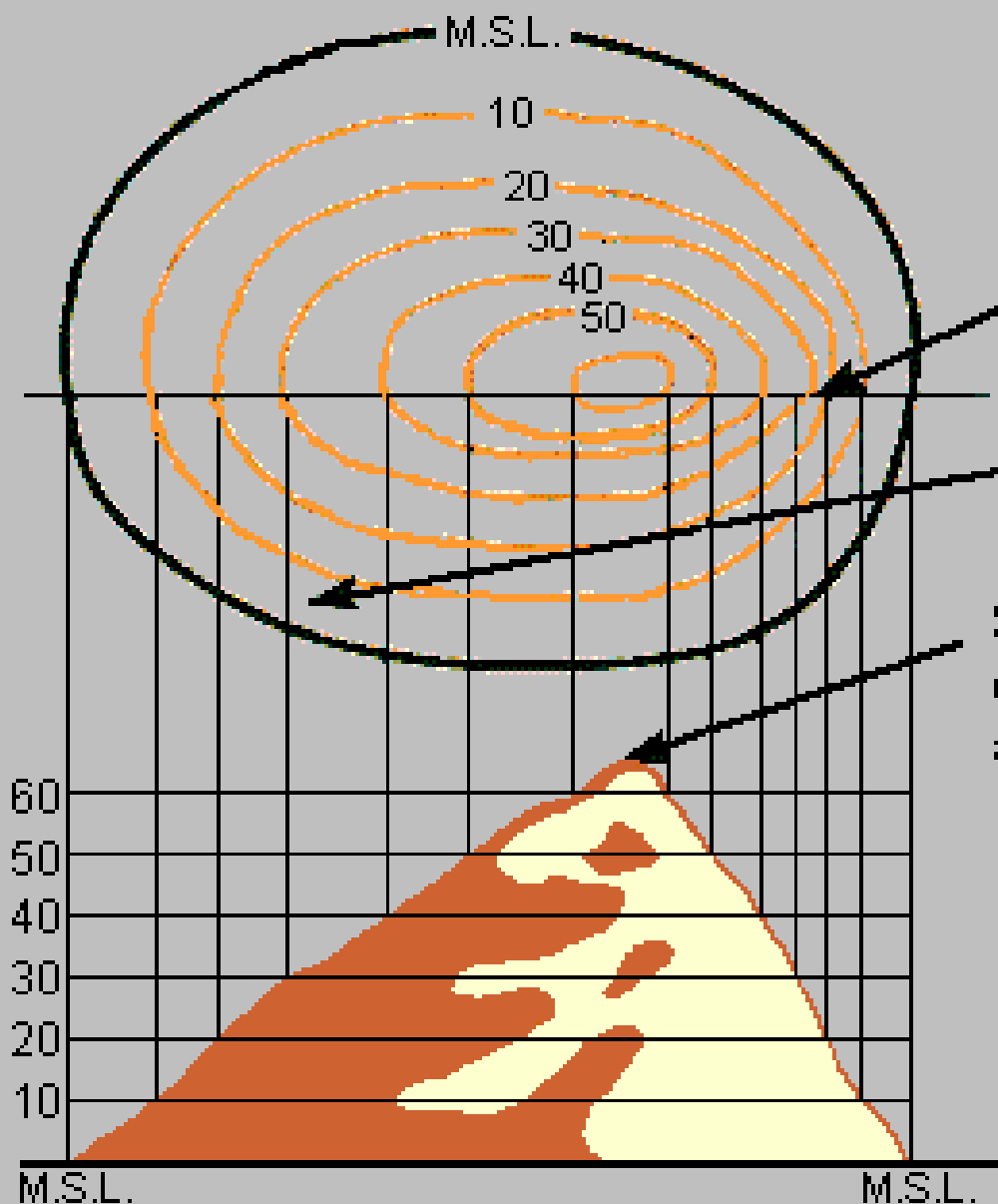
Elevations are marked on the map at regular intervals



How high is the peak at D & C?

MAP



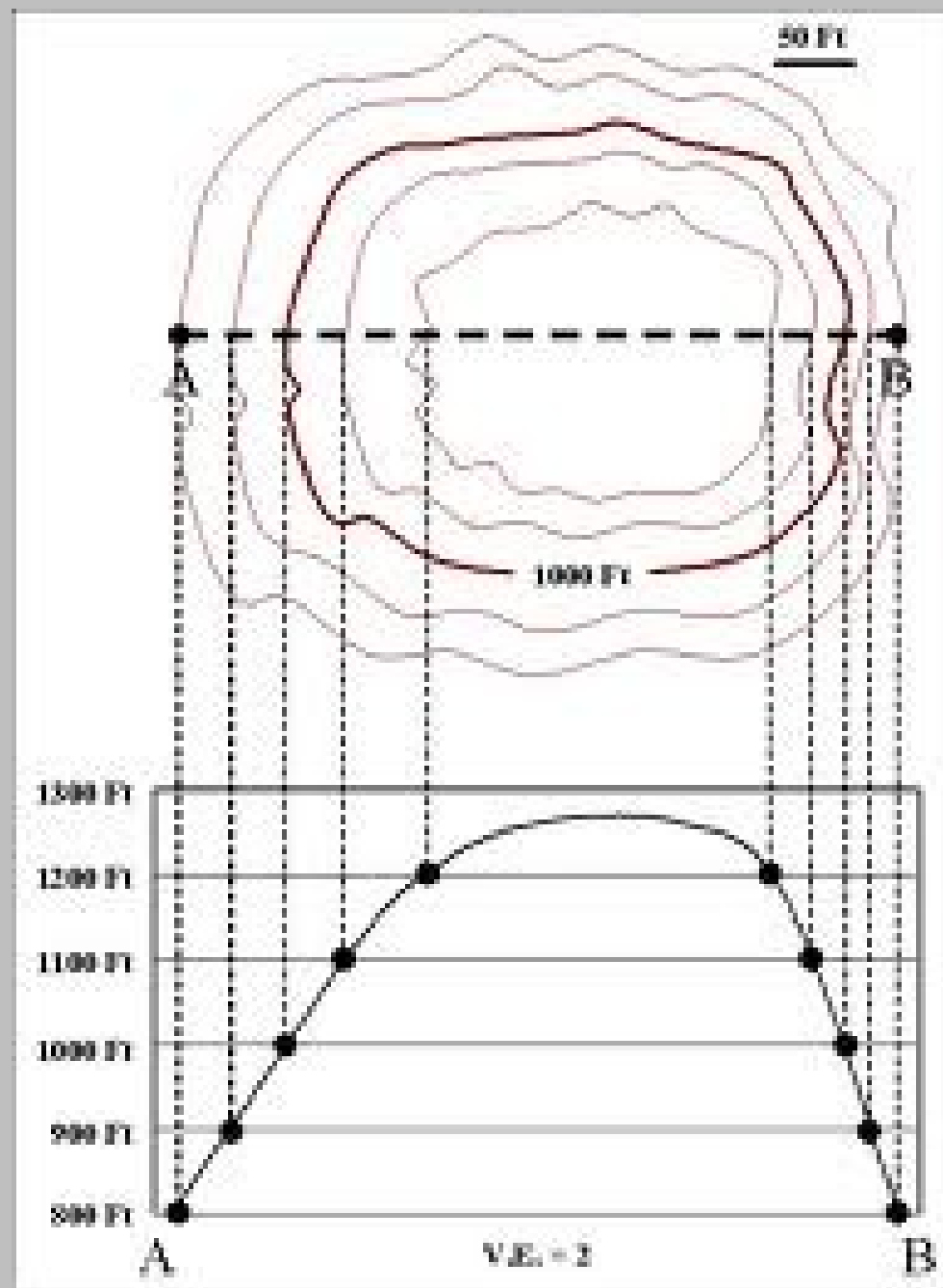


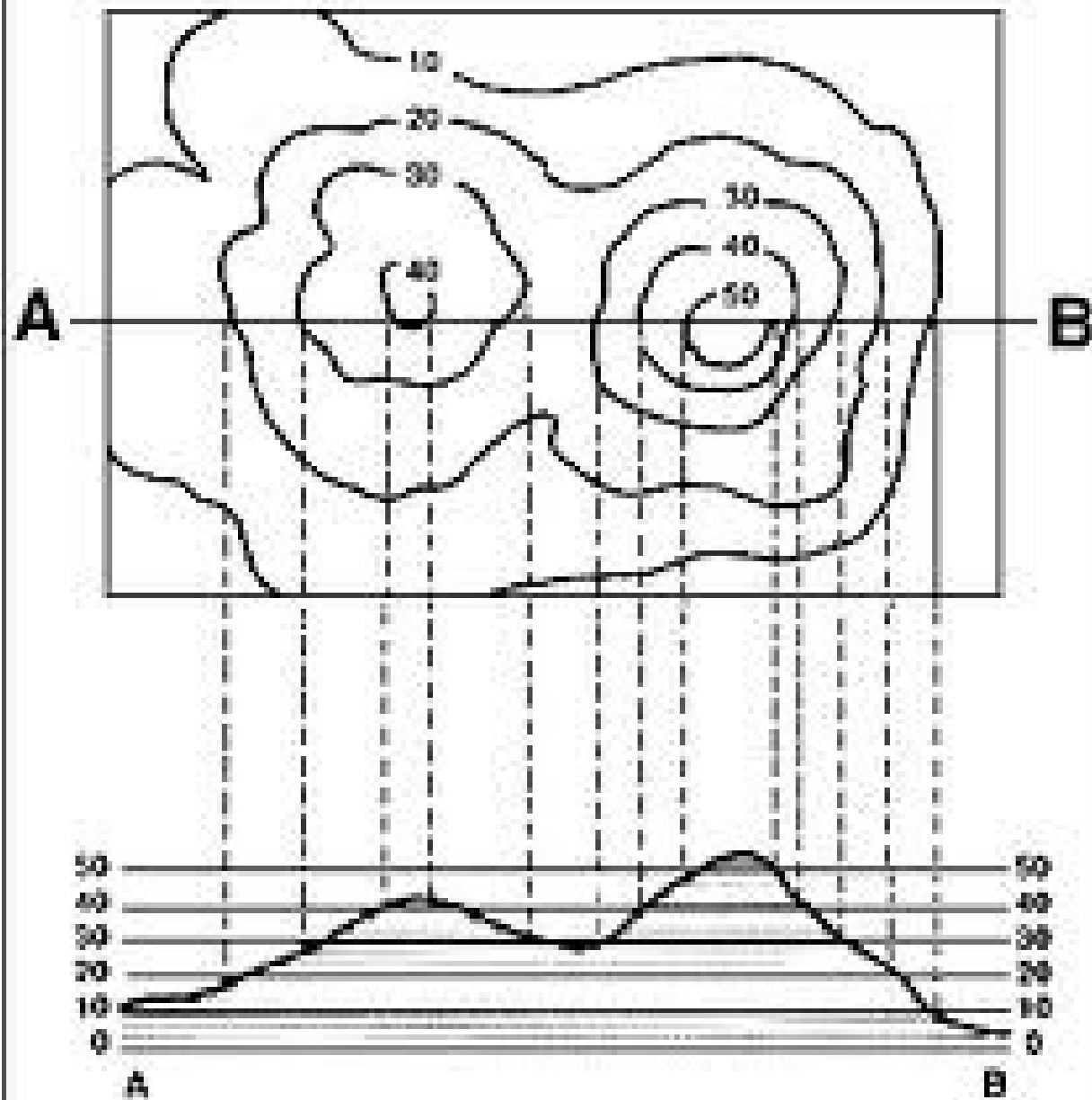
When close together, contour lines indicate a steep slope.

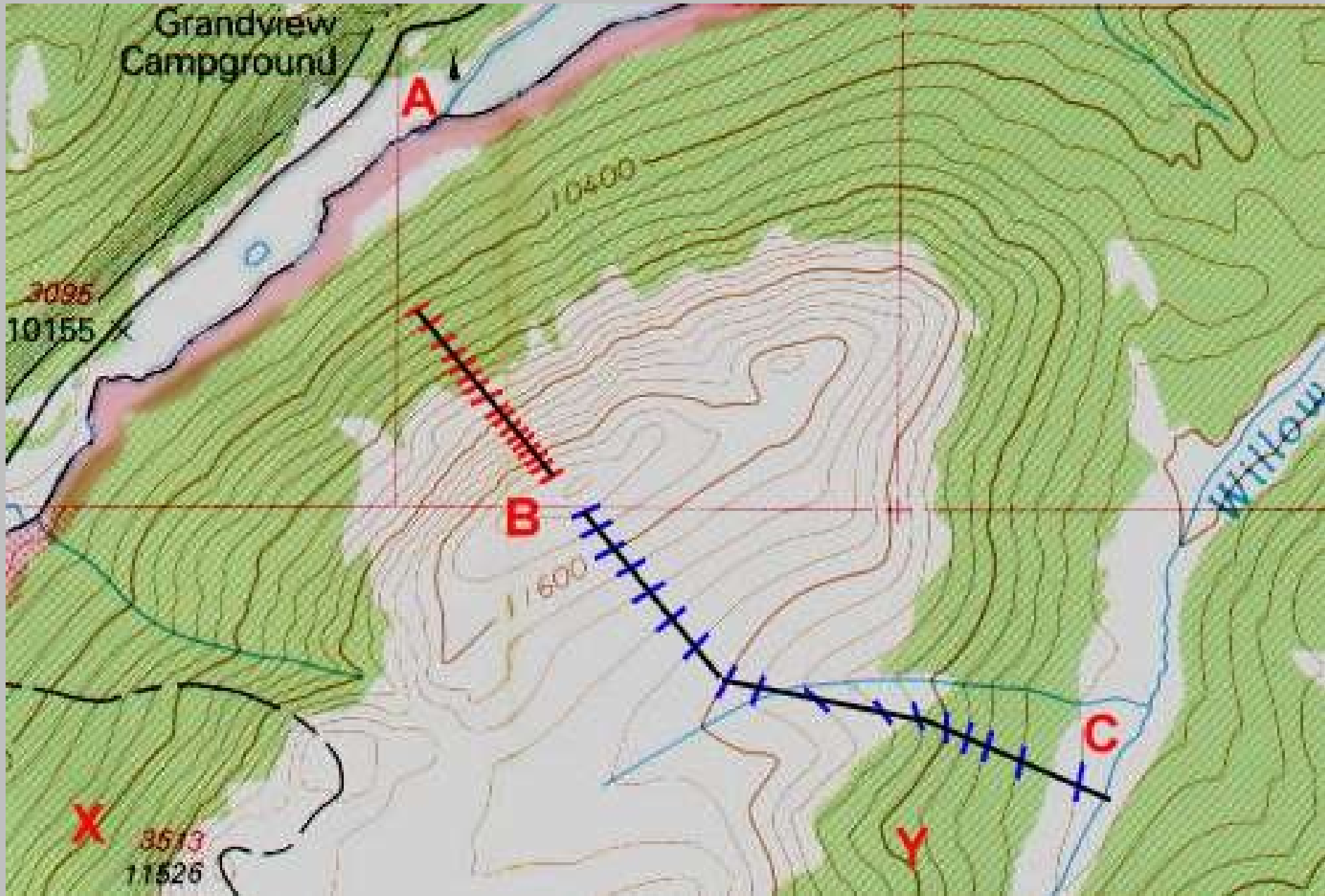
When far apart, contour lines indicate a gentle slope.

Spot elevations are heights between contour lines, and are shown on a map as dots with a value beside them.

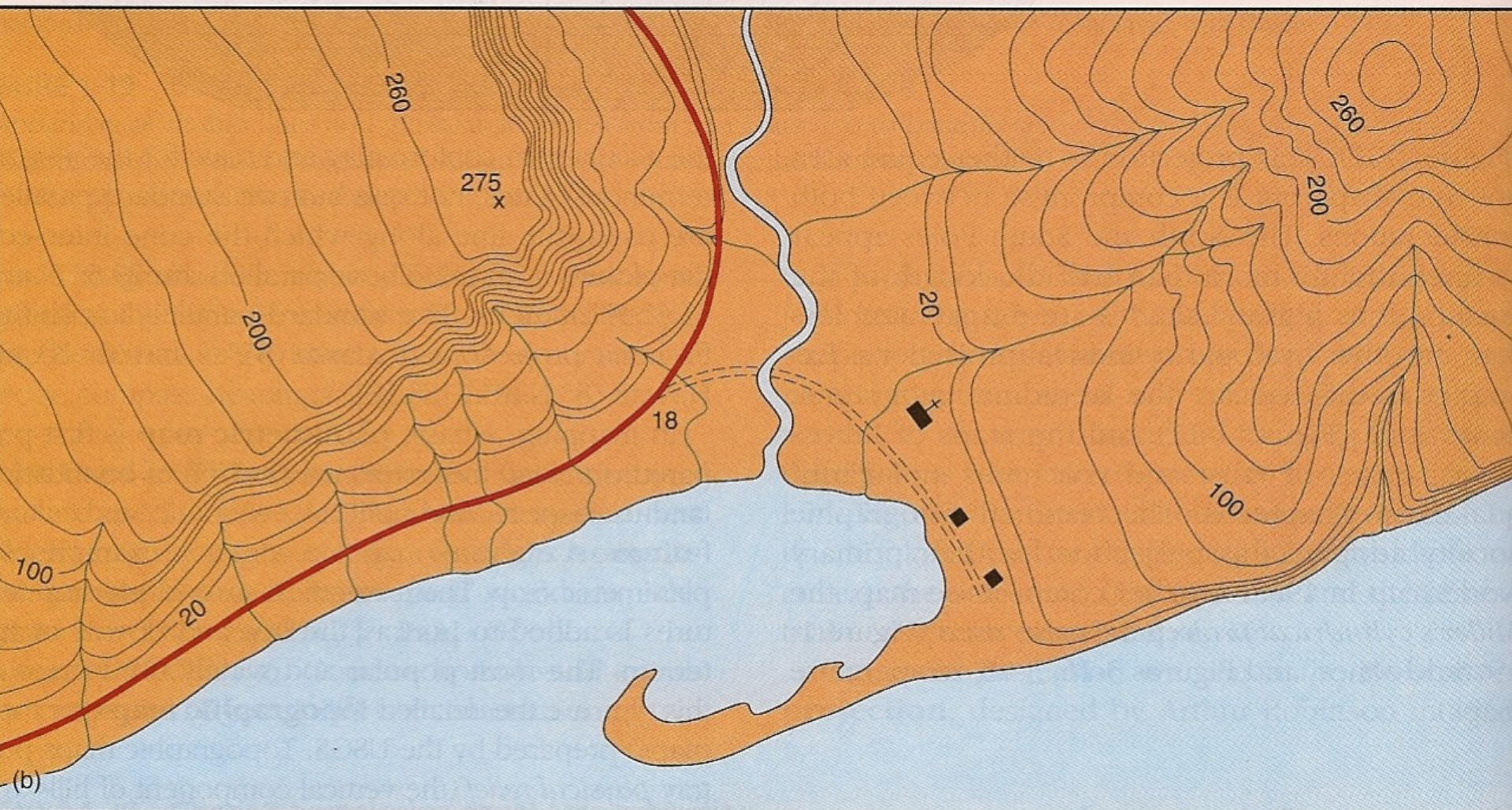
Mean Sea Level (M.S.L.)



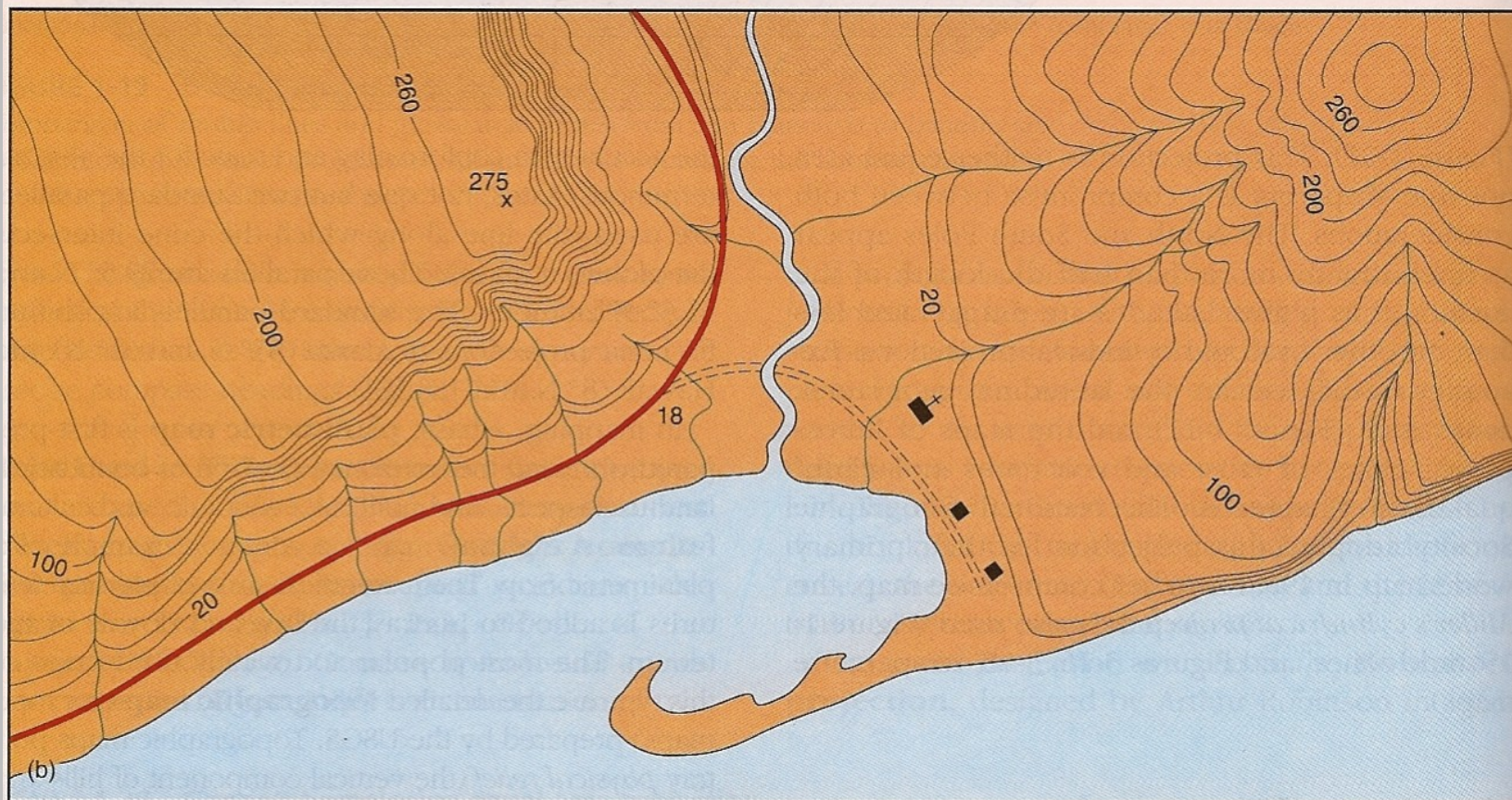




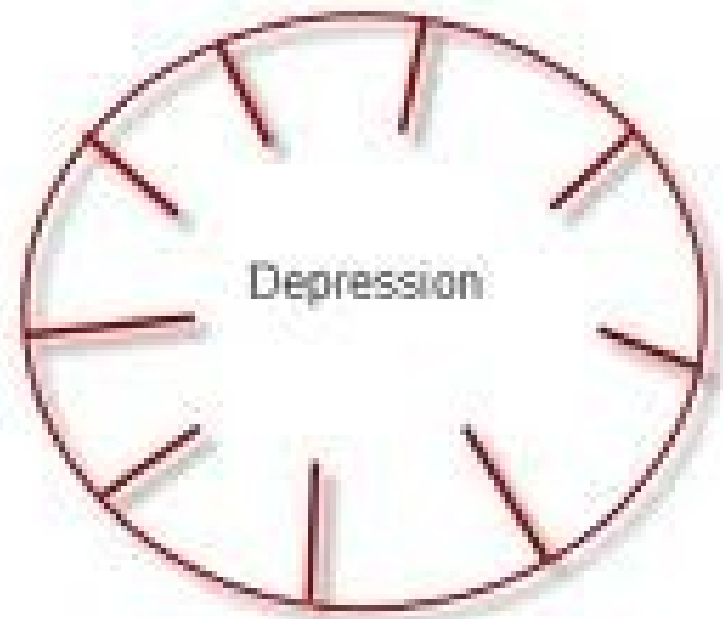
(a)

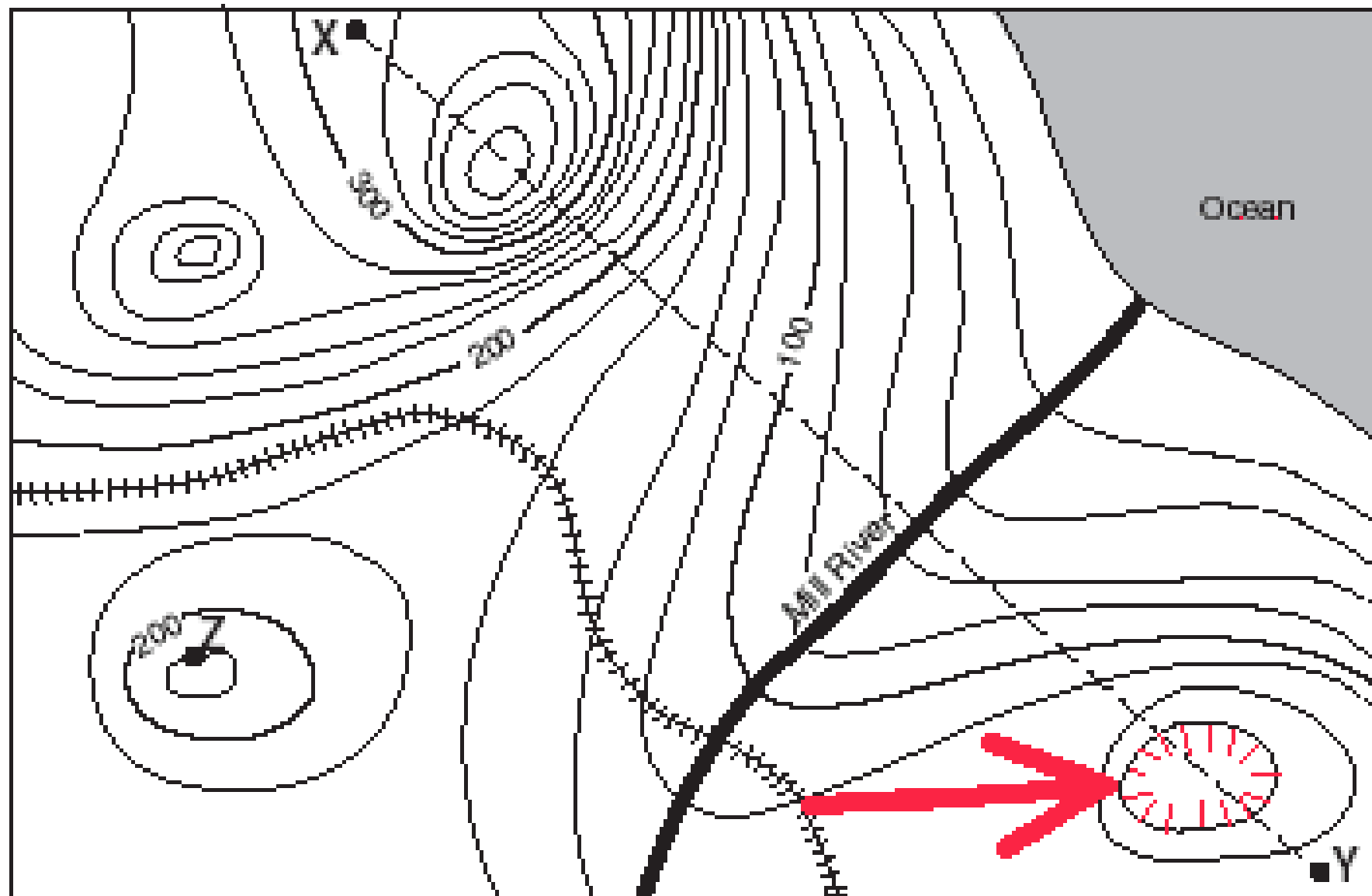


(b)



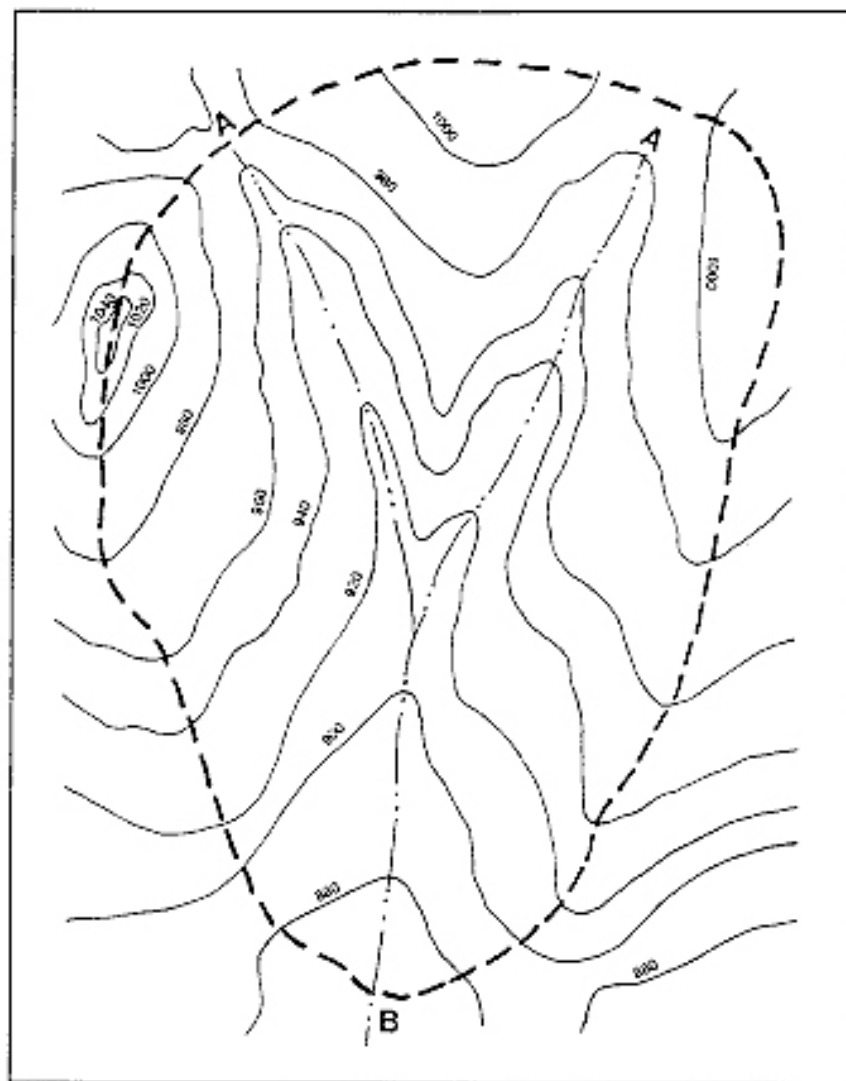
Peak or hole?





Contour interval = 20 meters

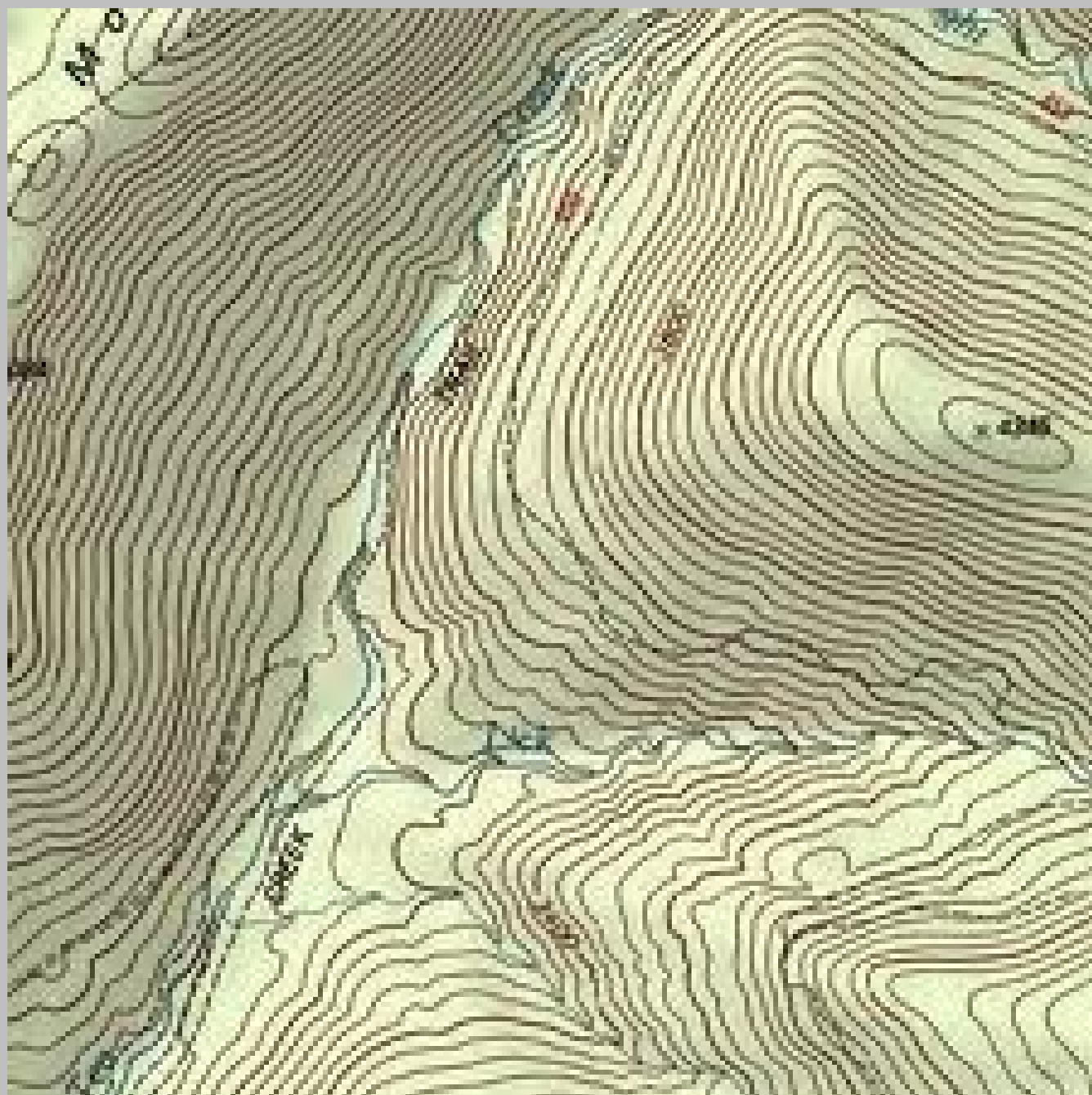


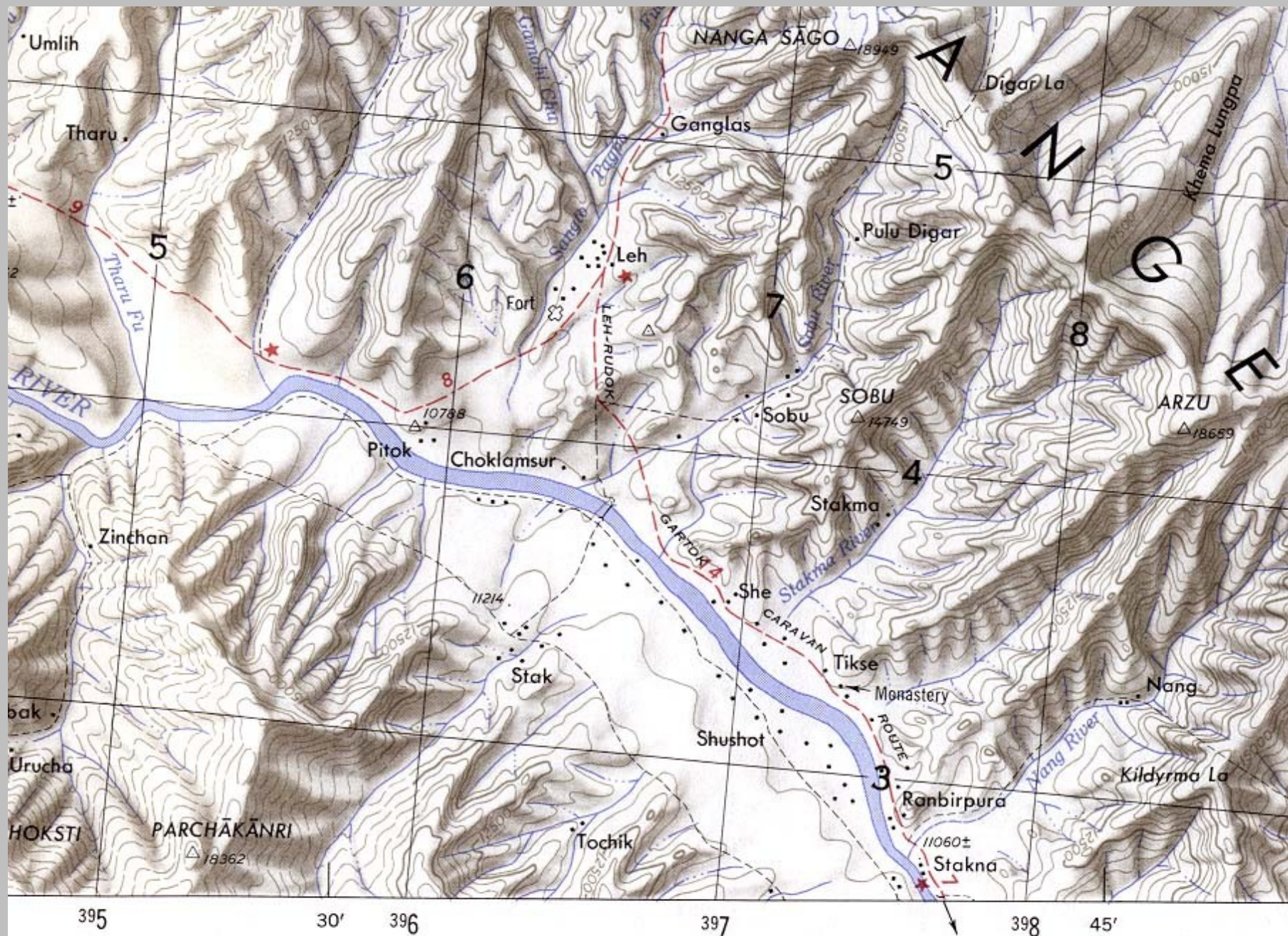


KEY:

Stream — • • —

Watershed Boundary — — —





The End

